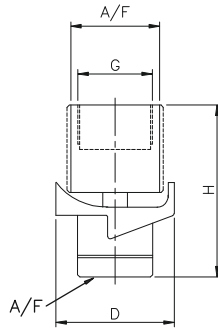


EF Turbo Cleaning Spray Nozzles Stainless Steel Versions

EF



The turbo nozzles are generally used for washing of industrial storage tanks small barrels and used in the dairy, chemical, pharmaceutical, food industries and process industries. The rotating Disc dispense an instant powerful dense spray to all the interior surface of the vessels. Spray coverage 180° up and down 360°.

Coverage Type	Spray Angle
A	180°
B	180°
E	360°

MODEL NO.	SPRAY ANGLE	CONNECTION		FLOW CAPACITY IN LPM AT DIFFERENT PRESSURE					G/A DIMENSION. MM			
				PRESSURE [BAR]								
		3/4"	1"	1.5	2	3	5	7	CONN.	H	D	A/F
EF2.400	A/B/E	●		34.64	40.00	48.99	63.25	74.83	3/4"	74	51	38
EF2.520	A/B/E	●		45.03	52.00	63.69	82.22	97.28	Weight (Metals) = 460 gms. Approx			
EF2.720	A/B/E	●	●	62.35	72.00	88.18	113.84	134.70	1"	74	51	38
EF2.950	A/B/E	●	●	82.27	95.00	116.35	150.21	177.73	Weight (Metals) = 460 gms. Approx			
EF3.120	A/B/E		●	103.92	120.0	146.97	189.74	224.50				
EF3.140	A/B/E		●	121.24	140.0	171.46	221.36	261.92				

End Connection : X – BSP, Y - BSPT, Z – NPT Available.

Male Connection On Request