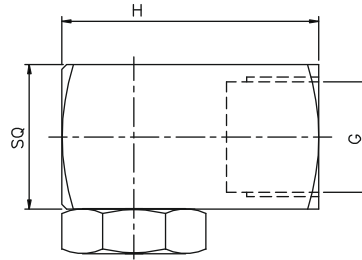
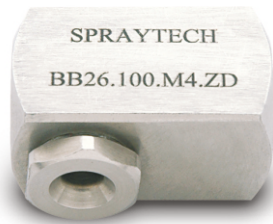


BB Series Hollow Cone Spray Nozzles

BB



Tangential Entry Hollow Cone Standard Angle Spray Nozzles (Non-Clogging) :

Hollow cone spray nozzles work on the tangential flow principle and are manufactured by machine tool operation from metal bar stock. This offers versatile construction of small sized nozzles. In addition nozzles can be made on request from any special material and alloys that are available as a bar stock. This flow pattern is essentially a circular ring of liquid. Hollow cone nozzles are best for application requiring good atomization of liquids at lower pressures or where quick heat transfer is needed. These nozzles also feature large and unobstructed flow passage which provide a relatively high resistance to clogging.

There are Following types of hollow cone nozzles.

- 1) Tangential Entry
- 2) Inline (Axial) Entry
- 3) Spiral Hollow cone.

- Characteristic** : High resistance to clogging
- Design** : Vaneless (Two Piece Construction) Non clogging
- Application** : Cooling & Washing of gas

60° SPRAY ANGLE	END CONNECTION (G)					INLET DIA. NOM. (MM)	ORIFICE DIA. NOM. (MM)	FLOW CAPACITY IN LPM AT DIFFERENT PRESSURE							G/A DIMENSION. MM		
	1/8"	1/4"	3/8"	1/2"	3/4"			PRESSURE [BAR]									
MODEL NO.	BSP	BSP	BSP	BSP	BSP			0.5	1.0	2.0	3.0	5.0	7.0	10.0	CONN.	H	SQ
BB14.050	●					1.1	1.2	0.25	0.35	0.50	0.61	0.79	0.94	1.12	1/8"	25.5	16
BB14.075	●	●				1.3	1.4	0.375	0.53	0.75	0.92	1.19	1.40	1.68	Weight (Metals) = XX gms. Approx		
BB14.100	●	●				1.6	1.7	0.5	0.71	1.00	1.22	1.58	1.87	2.24	1/4"	35	20
BB14.150	●	●				1.9	2.1	0.75	1.06	1.50	1.84	2.37	2.81	3.35	Weight (Metals) = 62.0 gms. Approx		
BB14.175	●	●				2.0	2.3	0.875	1.24	1.75	2.14	2.77	3.27	3.91	3/8"	35	22
BB14.200	●	●				2.2	2.4	1.0	1.41	2.00	2.45	3.16	3.74	4.47	Weight (Metals) = 77.0 gms. Approx		
BB14.250	●	●				2.5	2.7	1.25	1.77	2.50	3.06	3.95	4.68	5.59	1/2"	45	25
BB14.300	●	●				2.7	3.0	1.50	2.12	3.00	3.67	4.74	5.61	6.71	Weight (Metals) = XX gms. Approx		
BB14.350	●	●	●			2.9	3.2	1.75	2.47	3.50	4.29	5.53	6.55	7.83	3/4"	57	32
BB14.400	●	●	●			3.1	3.5	2.00	2.83	4.00	4.90	6.32	7.48	8.94	Weight (Metals) = 151.0 gms. Approx		
BB14.475	●	●	●			3.4	3.7	2.37	3.36	4.75	5.82	7.51	8.89	10.62			
BB14.650	●	●	●			4.0	4.4	3.25	4.60	6.50	7.96	10.28	12.16	14.53			
BB14.800		●	●			4.4	4.9	4.00	5.66	8.00	9.80	12.65	14.97	17.89			
BB24.100			●			4.9	5.5	5.00	7.07	10.00	12.25	15.81	18.71	22.36			
BB24.125			●			5.5	6.1	6.25	8.84	12.50	15.31	19.76	23.39	27.95			
BB24.160			●	●		6.2	6.9	8.00	11.31	16.00	19.60	25.30	29.93	35.78			
BB24.180			●	●		6.5	7.2	9.00	12.73	18.00	22.05	28.46	33.67	40.25			
BB24.200			●	●		6.9	7.7	10.0	14.14	20.00	24.49	31.62	37.42	44.72			
BB24.225				●	●	7.4	8.2	11.25	15.91	22.50	27.56	35.58	42.09	50.31			
BB24.250				●	●	7.8	8.6	12.5	17.68	25.00	30.62	39.53	46.77	55.90			
BB24.320				●	●	8.8	9.8	16.0	22.63	32.00	39.19	50.60	59.87	71.55			
BB24.400				●	●	9.8	10.9	20.0	28.28	40.00	48.99	63.25	74.83	89.44			
BB24.520				●	●	11.2	12.4	26.0	36.77	52.00	63.69	82.22	97.28	116.0			
BB24.650				●	●	12.5	13.9	32.5	45.96	65.00	79.61	102.0	121.0	145.0			
BB24.800				●	●	13.9	15.4	40.0	56.57	80.00	97.98	126.0	149.0	178.0			

End Connection : X – BSP, Y - BSPT, Z – NPT Available.

BB Series Hollow Cone Spray Nozzles

90° SPRAY ANGLE	END CONNECTION (G)					INLET DIA. NOM. (mm)	ORIFICE DIA. NOM. (mm)	FLOW CAPACITY IN LPM AT DIFFERENT PRESSURE							G/A DIMENSION. MM		
	1/8"	1/4"	3/8"	1/2"	3/4"			PRESSURE [BAR]									
MODEL NO.	BSP	BSP	BSP	BSP	BSP			0.5	1.0	2.0	3.0	5.0	7.0	10.0	CONN.	H	SQ
BB16.050	●					1.1	1.2	0.25	0.35	0.5	0.61	0.79	0.94	1.12	1/8"	25.5	16
BB16.075	●	●				1.3	1.4	0.375	0.53	0.7	0.92	1.19	1.40	1.68	Weight (Metals) = 35.0 gms. Approx		
BB16.100	●	●				1.6	1.7	0.5	0.71	1.00	1.22	1.58	1.87	2.24	1/4"	35	20
BB16.150	●	●				1.9	2.1	0.75	1.06	1.50	1.84	2.37	2.81	3.35	Weight (Metals) = 62.0 gms. Approx		
BB16.175	●	●				2.0	2.3	0.875	1.24	1.75	2.14	2.77	3.27	3.91	3/8"	35	22
BB16.200	●	●				2.2	2.4	1.0	1.41	2.00	2.45	3.16	3.74	4.47	Weight (Metals) = 77.0 gms. Approx		
BB16.250	●	●				2.5	2.7	1.25	1.77	2.50	3.06	3.95	4.68	5.59	1/2"	45	25
BB16.300	●	●				2.7	3.0	1.50	2.12	3.00	3.67	4.74	5.61	6.71	Weight (Metals) = 110.0 gms. Approx		
BB16.350	●	●	●			2.9	3.2	1.75	2.47	3.50	4.29	5.53	6.55	7.83	3/4"	57	32
BB16.400	●	●	●			3.1	3.5	2.00	2.83	4.00	4.90	6.32	7.48	8.94	Weight (Metals) = 151.0 gms. Approx		
BB16.475	●	●	●			3.4	3.7	2.37	3.36	4.75	5.82	7.51	8.89	10.62			
BB16.650	●	●	●			4.0	4.4	3.25	4.60	6.50	7.96	10.28	12.16	14.53			
BB16.800		●	●			4.4	4.9	4.00	5.66	8.00	9.80	12.65	14.97	17.89			
BB26.100		●	●			4.9	5.5	5.00	7.07	10.00	12.25	15.81	18.71	22.36			
BB26.125		●	●			5.5	6.1	6.25	8.84	12.50	15.31	19.76	23.39	27.95			
BB26.160		●	●	●		6.2	6.9	8.00	11.31	16.00	19.60	25.30	29.93	35.78			
BB26.180		●	●	●				9.00	12.73	18.00	22.05	28.46	33.67	40.25			
BB26.200		●	●	●		6.9	7.7	10.0	14.14	20.00	24.49	31.62	37.42	44.72			
BB26.225		●	●	●		7.4	8.2	11.25	15.91	22.50	27.56	35.58	42.09	50.31			
BB26.250				●	●	7.8	8.6	12.5	17.68	25.00	30.62	39.53	46.77	55.90			
BB26.320				●	●	8.8	9.8	16.0	22.63	32.00	39.19	50.60	59.87	71.55			
BB26.400				●	●	9.8	10.9	20.0	28.28	40.00	48.99	63.25	74.83	89.44			
BB26.520					●	11.2	12.4	26.0	36.77	52.00	63.69	82.22	97.28	116			
BB26.650					●	12.5	13.9	32.5	45.96	65.00	79.61	102.77	121	145			
BB26.800					●	13.9	15.4	40.0	56.57	80.00	97.98	126.49	149	178			

120° SPRAY ANGLE	END CONNECTION (G)					INLET DIA. NOM. (mm)	ORIFICE DIA. NOM. (mm)	FLOW CAPACITY IN LPM AT DIFFERENT PRESSURE							G/A DIMENSION. MM		
	1/8"	1/4"	3/8"	1/2"	3/4"			PRESSURE [BAR]									
MODEL NO.	BSP	BSP	BSP	BSP	BSP			0.5	1.0	2.0	3.0	5.0	7.0	10.0	CONN.	H	SQ
BB18.050	●					1.1	1.2	0.25	0.35	0.5	0.61	0.79	0.94	1.12	1/8"	25.5	16
BB18.075	●	●				1.3	1.4	0.375	0.53	0.7	0.92	1.19	1.40	1.68	Weight (Metals) = XX gms. Approx		
BB18.100	●	●				1.6	1.7	0.5	0.71	1.00	1.22	1.58	1.87	2.24	1/4"	35	20
BB18.150	●	●				1.9	2.1	0.75	1.06	1.50	1.84	2.37	2.81	3.35	Weight (Metals) = XX gms. Approx		
BB18.175	●	●				2.0	2.3	0.875	1.24	1.75	2.14	2.77	3.27	3.91	3/8"	35	22
BB18.200	●	●				2.2	2.4	1.0	1.41	2.00	2.45	3.16	3.74	4.47	Weight (Metals) = XX gms. Approx		
BB18.250	●	●				2.5	2.7	1.25	1.77	2.50	3.06	3.95	4.68	5.59	1/2"	45	25
BB18.300	●	●				2.7	3.0	1.50	2.12	3.00	3.67	4.74	5.61	6.71	Weight (Metals) = XX gms. Approx		
BB18.350	●	●	●			2.9	3.2	1.75	2.47	3.50	4.29	5.53	6.55	7.83	3/4"	57	32
BB18.400	●	●	●			3.1	3.5	2.00	2.83	4.00	4.90	6.32	7.48	8.94	Weight (Metals) = XX gms. Approx		
BB18.475	●	●	●			3.4	3.7	2.37	3.36	4.75	5.82	7.51	8.89	10.62			
BB18.650	●	●	●			4.0	4.4	3.25	4.60	6.50	7.96	10.28	12.16	14.53			
BB18.800		●	●			4.4	4.9	4.00	5.66	8.00	9.80	12.65	14.97	17.89			
BB28.100		●	●			4.9	5.5	5.00	7.07	10.00	12.25	15.81	18.71	22.36			
BB28.125		●	●			5.5	6.1	6.25	8.84	12.50	15.31	19.76	23.39	27.95			
BB28.160			●	●		6.2	6.9	8.00	11.31	16.00	19.60	25.30	29.93	35.78			
BB28.180			●	●		6.5	7.2	9.00	12.73	18.00	22.05	28.46	33.67	40.25			
BB28.200			●	●		6.9	7.7	10.0	14.14	20.00	24.49	31.62	37.42	44.72			
BB28.225				●		7.4	8.2	11.25	15.91	22.50	27.56	35.58	42.09	50.31			
BB28.250				●	●	7.8	8.6	12.5	17.68	25.00	30.62	39.53	46.77	55.90			
BB28.320				●	●	8.8	9.8	16.0	22.63	32.00	39.19	50.60	59.87	71.55			
BB28.400				●	●	9.8	10.9	20.0	28.28	40.00	48.99	63.25	74.83	89.44			
BB28.520					●	11.2	12.4	26.0	36.77	52.00	63.69	82.22	97.28	116			
BB28.650					●	12.5	13.9	32.5	45.96	65.00	79.61	102	121	145			
BB28.800					●	13.9	15.4	40.0	56.57	80.00	97.98	126	149	178			

End Connection : X – BSP, Y - BSPT, Z – NPT Available.