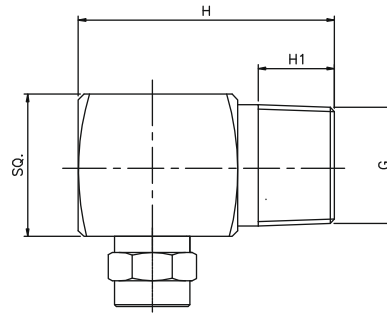


DJ Series Tangential Entry Vaneless Full Cone Spray Nozzles

DJ



TWO PIECE BODY
TANGENTIAL ENTRY FULL CONE



Typical Applications :

Washing and cleaning cooling of gas or solid product surface spraying Improvement of chemical reactions.

MODEL NO.	CONNECTION END					ORIFIC SIZE (mm)	FLOW CAPACITY IN LPM AT DIFFERENT PRESSURE							G/A DIMENSION. MM			
	1/4"	3/8"	1/2"	3/4"	1"		PRESSURE [BAR]							CONN.	H	H1	SQ
	BSP	BSP	BSP	BSP	BSP		0.5	1.0	2.0	3.0	5.0	7.0	10.0				
60° SPRAYNOZZLE																	
DJ14.350	●	●				2.6	1.75	2.47	3.50	4.29	5.53	6.55	7.83	1/4"	35	10	20
DJ14.400	●	●				2.9	2.00	2.83	4.00	4.90	6.32	7.48	8.94	Weight (Metals) = 72.0 gms. Approx			
DJ14.475		●				3.2	2.37	3.36	4.75	5.82	7.51	8.89	10.62	3/8"	35	10	20
DJ14.650		●				3.5	3.25	4.60	6.50	7.96	10.28	12.16	14.53	Weight (Metals) = 108.0 gms. Approx			
90° SPRAYNOZZLE														1/2"	45	13.2	25
DJ16.350	●					2.6	1.75	2.47	3.50	4.29	5.53	6.55	7.83	Weight (Metals) = 135.0 gms. Approx			
DJ16.400	●					2.9	2.00	2.83	4.00	4.90	6.32	7.48	8.94	3/4"	57	16	32
DJ16.475		●				3.2	2.37	3.36	4.75	5.82	7.51	8.89	10.62	Weight (Metals) = 630.0 gms. Approx			
DJ16.650		●				3.5	3.25	4.60	6.50	7.96	10.28	12.16	14.53	1"	57	18	36
DJ16.800		●				3.6	4.00	5.66	8.00	9.80	12.65	14.97	17.89	Weight (Metals) = XX gms. Approx			
DJ26.100		●				4.3	5.00	7.07	10.00	12.25	15.81	18.71	22.36				
DJ26.125		●				5.1	6.25	8.84	12.50	15.31	19.76	23.39	27.95				
DJ26.160		●				5.8	8.00	11.31	16.00	19.60	25.30	29.93	35.78				
DJ26.200			●			6.5	10.00	14.14	20.00	24.49	31.62	37.42	44.72				
DJ26.225			●			7.3	11.25	15.91	22.50	27.56	35.58	42.09	50.31				
DJ26.250			●			9.6	12.50	17.68	25.00	30.62	39.53	46.77	55.90				
DJ26.320				●		11.5	16.00	22.63	32.00	39.19	50.60	59.87	71.55				
DJ26.400					●	8.5	20.00	28.28	40.00	48.99	63.25	74.83	89.44				
DJ26.520					●	10.5	26.00	36.77	52.00	63.69	82.22	97.28	116.28				
120° SPRAYNOZZLE																	
DJ18.350	●					2.2	1.75	2.47	3.50	4.29	5.53	6.55	7.83				
DJ18.400	●					2.5	2.00	2.83	4.00	4.90	6.32	7.48	8.94				
DJ18.475		●				2.9	2.37	3.36	4.75	5.82	7.51	8.89	10.62				
DJ18.650		●				3.5	3.25	4.60	6.50	7.96	10.28	12.16	14.53				
DJ18.800		●				3.6	4.00	5.66	8.00	9.80	12.65	14.97	17.89				
DJ28.100		●				4.3	5.00	7.07	10.00	12.25	15.81	18.71	22.36				
DJ28.125		●				5.1	6.25	8.84	12.50	15.31	19.76	23.39	27.95				
DJ28.160		●	●			5.8	8.00	11.31	16.00	19.60	25.30	29.93	35.78				
DJ28.200			●			6.5	10.00	14.14	20.00	24.49	31.62	37.42	44.72				
DJ28.225			●			7.3	11.25	15.91	22.50	27.56	35.58	42.09	50.31				
DJ28.250			●			9.6	12.50	17.68	25.00	30.62	39.53	46.77	55.90				
DJ28.320				●		11.5	16.00	22.63	32.00	39.19	50.60	59.87	71.55				
DJ28.400					●	8.5	20.00	28.28	40.00	48.99	63.25	74.83	89.44				
DJ28.520					●	10.5	26.00	36.77	52.00	63.69	82.22	97.28	116.28				
DJ28.650					●	11.7	32.50	45.96	65.00	79.61	102.77	121.60	145.34				
DJ28.720					●	12.4	36.00	50.91	72.00	88.18	113.8	134.7	161.0				
DJ28.800					●	13.0	40.00	56.57	80.00	97.98	126.49	149.67	178.89				

End Connection : X – BSP, Y - BSPT, Z – NPT Available.