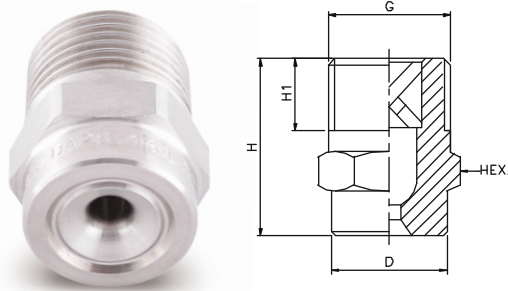


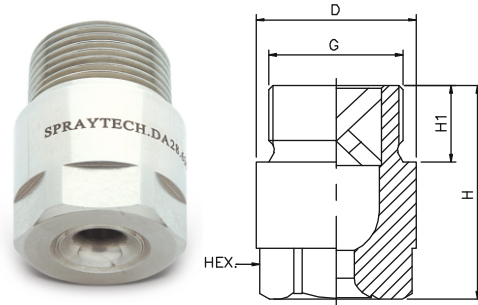
# DA Series Full Cone Spray Nozzles



(Male)



**Design for 1/8", 1/4", 3/8" & 1/2"**



**Design for 3/4" & 2"**

Full Cone Spray Nozzle form complete spray coverage in a round area. It provides an uniform spray distribution of medium to large size drops resulting from their vane design which features large flow passage and control characteristics.

**Characteristic :** Internal vane design features large flow passage and fine control.

**Design :** Removable vane, Axial flow.

**Type :** Round pattern, Threaded connection.

MODEL NO.		CONNECTION END										FLOW CAPACITY IN LPM AT DIFFERENT PRESSURE						G/A DIMENSION. MM					
		1/8"	1/4"	3/8"	1/2"	3/4"	1"	1 1/4"	1 1/2"	2"	ORIFICE SIZE (mm)												PRESSURE [BAR]
SPRAY ANGLE		BSP	BSP	BSP	BSP	BSP	BSP	BSP	BSP	BSP	ORIFICE SIZE (mm)	0.5	1.0	2.0	3.0	5.0	7.0	10.0	CONN.	H	H1	D	HEX
15°	30°																						
DA11.100	DA12.100	●									1.2	0.50	0.71	1.00	1.22	1.58	1.87	2.24	1/8"	18	6.5	10	11
DA11.150	DA12.150	●									1.5	0.75	1.06	1.50	1.84	2.37	2.81	3.35	Weight (Metals) = 9 gms. Approx				
DA11.175	DA12.175	●									1.6	0.87	1.24	1.75	2.14	2.77	3.27	3.91	1/4"	22	10	13	14
DA11.200	DA12.200	●									1.7	1.00	1.41	2.00	2.45	3.16	3.74	4.47	Weight (Metals) = 17 gms. Approx				
DA11.250	DA12.250	●									1.9	1.25	1.77	2.50	3.06	3.95	4.68	5.59	3/8"	25	10	16	17
DA11.300	DA12.300	●									2.0	1.50	2.12	3.00	3.67	4.74	5.61	6.71	Weight (Metals) = 30 gms. Approx				
DA11.350	DA12.350	●									2.3	1.75	2.47	3.50	4.29	5.53	6.55	7.83	1/2"	32	13.2	21	22
DA11.400	DA12.400	●									2.5	2.00	2.83	4.00	4.90	6.32	7.48	8.94	Weight (Metals) = 66 gms. Approx				
DA11.475	DA12.475	●	●								2.7	2.37	3.36	4.75	5.82	7.51	8.89	10.62	3/4"	42	15	32	27
DA11.650	DA12.650		●								3.1	3.25	4.60	6.50	7.96	10.28	12.16	14.53	Weight (Metals) = 155 gms. Approx				
DA11.800	DA12.800		●								3.5	4.00	5.66	8.00	9.80	12.65	14.97	17.89	1"	56	17	39	36
DA21.100	DA22.100		●	●							3.9	5.00	7.07	10.00	12.25	15.81	18.71	22.36	Weight (Metals) = 367 gms. Approx				
DA21.125	DA22.125			●							4.3	6.25	8.84	12.50	15.31	19.76	23.39	27.95	1 1/4"	74	19	49	41
DA21.160	DA22.160			●	●						4.9	8.00	11.31	16.00	19.60	25.30	29.93	35.78	Weight (Metals) = 670 gms. Approx				
DA21.180	DA22.180				●						5.2	9.00	12.73	18.00	22.05	28.46	33.67	33.67	1 1/2"	85	22	59	50
DA21.200	DA22.200				●						5.5	10.00	14.14	20.00	24.49	31.62	37.42	44.72	Weight (Metals) = 1172 gms. Approx				
DA21.225	DA22.225				●						5.8	11.25	15.91	22.50	27.56	35.58	42.09	50.31	2"	106	24	68	60
DA21.250	DA22.250				●	●					6.1	12.50	17.68	25.00	30.62	39.53	46.77	55.90	Weight (Metals) = 1896 gms. Approx				
DA21.320	DA22.320					●					6.9	16.00	22.63	32.00	39.19	50.60	59.87	71.55					
DA21.400	DA22.400					●	●				7.7	20.00	28.28	40.00	48.99	63.25	74.83	89.44					
DA21.520	DA22.520						●	●			8.8	26.00	36.77	52.00	63.69	82.22	97.28	116.28					
DA21.650	DA22.650							●	●		9.9	32.50	45.96	65.00	79.61	102.77	121.60	145.34					
DA21.720	DA22.720							●	●		10.4	36.00	50.91	72.00	88.18	113.8	134.7	161.00					
DA21.800	DA22.800								●	●	11.5	40.00	56.57	80.00	97.98	126.49	149.67	178.89					
DA31.100	DA32.100									●	12.9	50.00	70.71	100.0	122.47	158.11	187.08	223.61					
DA31.118	DA32.118									●	14.0	59.00	83.44	118.0	144.52	186.57	220.76	263.86					
DA31.130	DA32.130									●	14.7	65.00	91.92	130.0	159.22	205.55	243.21	290.69					
DA31.160	DA32.160									●	16.3	80.00	113.14	160.0	195.96	252.98	299.33	357.77					
DA31.200	DA32.200									●	18.2	100	141.42	200.0	244.95	316.23	374.17	447.21					
DA31.227	DA32.227									●	19.4	113.5	160.51	227.0	278.02	358.92	424.68	507.59					
DA31.250	DA32.250									●	20.4	125	176.78	250.0	306.19	395.19	467.71	559.02					
DA31.337	DA32.337									●	23.7	168.5	238.29	337.0	412.74	532.84	630.47	753.55					

End Connection : X – BSP, Y - BSPT, Z – NPT Available.

# DA Series Full Cone Spray Nozzles

(Male)

45° SPRAY ANGLE	CONNECTION END						ORIFICE SIZE (mm)	FLOW CAPACITY IN LPM AT DIFFERENT PRESSURE						G/A DIMENSION. MM					
	1/8"	1/4"	3/8"	1/2"	3/4"	1"		PRESSURE [BAR]						CONN.	H	H1	D	HEX	
MODEL NO.	BSP	BSP	BSP	BSP	BSP	BSP	0.5	1.0	2.0	3.0	5.0	7.0	10.0						
DA13.100	●						1.2	0.50	0.71	1.00	1.22	1.58	1.87	2.24	1/8"	18	6.5	10	11
DA13.150	●						1.5	0.75	1.06	1.50	1.84	2.37	2.81	3.35	Weight (Metals) = 9 gms. Approx				
DA13.175	●						1.6	0.87	1.24	1.75	2.14	2.77	3.27	3.91	1/4"	22	10	13	14
DA13.200	●						1.7	1.00	1.41	2.00	2.45	3.16	3.74	4.47	Weight (Metals) = 17 gms. Approx				
DA13.250	●	●					1.9	1.25	1.77	2.50	3.06	3.95	4.68	5.59	3/8"	25	10	16	17
DA13.300		●					2.0	1.50	2.12	3.00	3.67	4.74	5.61	6.71	Weight (Metals) = 30 gms. Approx				
DA13.350		●	●				2.2	1.75	2.47	3.50	4.29	5.53	6.55	7.83	1/2"	32	13.2	21	22
DA13.400		●	●				2.4	2.00	2.83	4.00	4.90	6.32	7.48	8.94	Weight (Metals) = 66 gms. Approx				
DA13.475		●	●				2.6	2.37	3.36	4.75	5.82	7.51	8.89	10.62	3/4"	42	15	32	27
DA13.650			●	●			3.1	3.25	4.60	6.50	7.96	10.28	12.16	14.53	Weight (Metals) = 155 gms. Approx				
DA13.800				●			3.4	4.00	5.66	8.00	9.80	12.65	14.97	17.89	1"	56	17	39	36
DA23.100				●			3.8	5.00	7.07	10.00	12.25	15.81	18.71	22.36	Weight (Metals) = 367 gms. Approx				
DA23.125				●	●		4.2	6.25	8.84	12.50	15.31	19.76	23.39	27.95					
DA23.160				●	●		4.8	8.00	11.31	16.00	19.60	25.30	29.93	35.78					
DA23.180					●		5.2	9.00	12.73	18.00	22.05	28.46	33.67	40.25					
DA23.200					●		5.4	10.00	14.14	20.00	24.49	31.62	37.42	44.72					
DA23.225						●	5.7	11.25	15.91	22.50	27.56	35.58	42.09	50.31					
DA23.250						●	6.0	12.50	17.68	25.00	30.62	39.53	46.77	55.90					
DA23.320						●	6.8	16.00	22.63	32.00	39.19	50.60	59.87	71.55					

60° SPRAY ANGLE	CONNECTION END						ORIFICE SIZE (mm)	FLOW CAPACITY IN LPM AT DIFFERENT PRESSURE						G/A DIMENSION. MM					
	1/8"	1/4"	3/8"	1/2"	3/4"	1"		PRESSURE [BAR]						CONN.	H	H1	D	HEX	
MODEL NO.	BSP	BSP	BSP	BSP	BSP	BSP	0.5	1.0	2.0	3.0	5.0	7.0	10.0						
DA14.100	●						1.2	0.50	0.71	1.00	1.22	1.58	1.87	2.24	1/8"	18	6.5	10	11
DA14.150	●						1.5	0.75	1.06	1.50	1.84	2.37	2.81	3.35	Weight (Metals) = 9 gms. Approx				
DA14.175	●						1.6	0.87	1.24	1.75	2.14	2.77	3.27	3.91	1/4"	22	10	13	14
DA14.200	●						1.7	1.00	1.41	2.00	2.45	3.16	3.74	4.47	Weight (Metals) = 17 gms. Approx				
DA14.250	●						1.9	1.25	1.77	2.50	3.06	3.95	4.68	5.59	3/8"	25	10	16	17
DA14.300	●						2.0	1.50	2.12	3.00	3.67	4.74	5.61	6.71	Weight (Metals) = 30 gms. Approx				
DA14.350	●	●					2.2	1.75	2.47	3.50	4.29	5.53	6.55	7.83	1/2"	32	13.2	21	22
DA14.400		●	●				2.4	2.00	2.83	4.00	4.90	6.32	7.48	8.94	Weight (Metals) = 66 gms. Approx				
DA14.475		●	●				2.6	2.37	3.36	4.75	5.82	7.51	8.89	10.62	3/4"	42	15	32	27
DA14.650		●	●				3.1	3.25	4.60	6.50	7.96	10.28	12.16	14.53	Weight (Metals) = 155 gms. Approx				
DA14.800			●				3.4	4.00	5.66	8.00	9.80	12.65	14.97	17.89	1"	56	17	39	36
DA24.100			●				3.8	5.00	7.07	10.00	12.25	15.81	18.71	22.36	Weight (Metals) = 367 gms. Approx				
DA24.125				●			4.2	6.25	8.84	12.50	15.31	19.76	23.39	27.95					
DA24.160				●			4.8	8.00	11.31	16.00	19.60	25.30	29.93	35.78					
DA24.180				●			5.2	9.00	12.73	18.00	22.05	28.46	33.67	40.25					
DA24.200					●		5.4	10.00	14.14	20.00	24.49	31.62	37.42	44.72					
DA24.225					●		5.7	11.25	15.91	22.50	27.56	35.58	42.09	50.31					
DA24.250					●		6.0	12.50	17.68	25.00	30.62	39.53	46.77	55.90					
DA24.320						●	6.8	16.00	22.63	32.00	39.19	50.60	59.87	71.55					
DA24.400						●	7.3	20.00	28.28	40.00	48.99	63.25	74.83	89.44					
DA24.520						●	8.3	26.00	36.77	52.00	63.69	82.22	97.28	116.28					

End Connection : X – BSP, Y - BSPT, Z – NPT Available.

# DA Series Full Cone Spray Nozzles

DA

(Male)

90° SPRAY ANGLE	CONNECTION END						ORIFICE SIZE (mm)	FLOW CAPACITY IN LPM AT DIFFERENT PRESSURE						G/A DIMENSION. MM					
	1/8"	1/4"	3/8"	1/2"	3/4"	1"		PRESSURE [BAR]						CONN.	H	H1	D	HEX	
MODEL NO.	BSP	BSP	BSP	BSP	BSP	BSP	0.5	1.0	2.0	3.0	5.0	7.0	10.0	1/8"	18	6.5	10	11	
DA16.100	●						1.2	0.50	0.71	1.00	1.22	1.58	1.87	2.24	1/8"	18	6.5	10	11
DA16.150	●						1.4	0.75	1.06	1.50	1.84	2.37	2.81	3.35	Weight (Metals) = 9 gms. Approx				
DA16.175	●						1.5	0.87	1.24	1.75	2.14	2.77	3.27	3.91	1/4"	22	10	13	14
DA16.200	●						1.6	1.00	1.41	2.00	2.45	3.16	3.74	4.47	Weight (Metals) = 17 gms. Approx				
DA16.250	●						1.8	1.25	1.77	2.50	3.06	3.95	4.68	5.59	3/8"	25	10	16	17
DA16.300	●						2.0	1.50	2.12	3.00	3.67	4.74	5.61	6.71	Weight (Metals) = 30 gms. Approx				
DA16.350	●	●	●				2.2	1.75	2.47	3.50	4.29	5.53	6.55	7.83	1/2"	32	13.2	21	22
DA16.400	●	●	●				2.3	2.00	2.83	4.00	4.90	6.32	7.48	8.94	Weight (Metals) = 66 gms. Approx				
DA16.475	●	●	●				2.5	2.37	3.36	4.75	5.82	7.51	8.89	10.62	3/4"	42	15	32	27
DA16.650	●	●	●				2.9	3.25	4.60	6.50	7.96	10.28	12.16	14.53	Weight (Metals) = 155 gms. Approx				
DA16.800	●	●	●				3.3	4.00	5.66	8.00	9.80	12.65	14.97	17.89	1"	56	17	39	36
DA26.100			●				3.6	5.00	7.07	10.00	12.25	15.81	18.71	22.36	Weight (Metals) = 367 gms. Approx				
DA26.125			●				4.1	6.25	8.84	12.50	15.31	19.76	23.39	27.95					
DA26.160			●	●			4.6	8.00	11.31	16.00	19.60	25.30	29.93	35.78					
DA26.180				●			5.9	9.00	12.73	18.00	22.05	28.46	33.67	40.25					
DA26.200				●			5.2	10.00	14.14	20.00	24.49	31.62	37.42	44.72					
DA26.225				●			5.5	11.25	15.91	22.50	27.56	35.58	42.09	50.31					
DA26.250				●	●		5.8	12.50	17.68	25.00	30.62	39.53	46.77	55.90					
DA26.320				●	●		6.5	16.00	22.63	32.00	39.19	50.60	59.87	71.55					
DA26.400					●		7.3	20.00	28.28	40.00	48.99	63.25	74.83	89.44					
DA26.520					●	●	8.3	26.00	36.77	52.00	63.69	82.22	97.28	116.28					
DA26.650					●		9.3	32.50	45.96	65.00	79.61	102.77	121.60	145.34					
DA26.720					●		9.8	36.00	50.91	72.00	88.18	113.8	134.7	161.0					

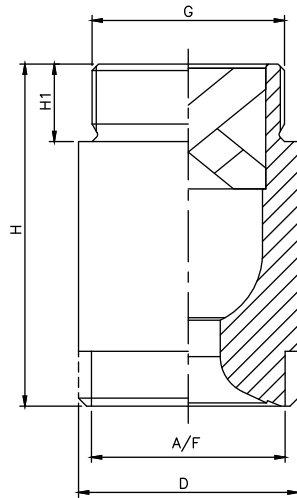
120° SPRAY ANGLE	CONNECTION END						ORIFICE SIZE (mm)	FLOW CAPACITY IN LPM AT DIFFERENT PRESSURE						G/A DIMENSION. MM					
	1/8"	1/4"	3/8"	1/2"	3/4"	1"		PRESSURE [BAR]						CONN.	H	H1	D	HEX	
MODEL NO.	BSP	BSP	BSP	BSP	BSP	BSP	0.5	1.0	2.0	3.0	5.0	7.0	10.0	1/8"	18	6.5	10	11	
DA18.100	●						1.2	0.50	0.71	1.00	1.22	1.58	1.87	2.24	1/8"	18	6.5	10	11
DA18.150	●						1.5	0.75	1.06	1.50	1.84	2.37	2.81	3.35	Weight (Metals) = 9 gms. Approx				
DA18.175	●						1.6	0.87	1.24	1.75	2.14	2.77	3.27	3.91	1/4"	22	10	13	14
DA18.200	●						1.7	1.00	1.41	2.00	2.45	3.16	3.74	4.47	Weight (Metals) = 17 gms. Approx				
DA18.250	●						1.9	1.25	1.77	2.50	3.06	3.95	4.68	5.59	3/8"	25	10	16	17
DA18.300	●						2.0	1.50	2.12	3.00	3.67	4.74	5.61	6.71	Weight (Metals) = 30 gms. Approx				
DA18.350	●						2.3	1.75	2.47	3.50	4.29	5.53	6.55	7.83	1/2"	32	13.2	21	22
DA18.400	●	●	●				2.5	2.00	2.83	4.00	4.90	6.32	7.48	8.94	Weight (Metals) = 66 gms. Approx				
DA18.475	●	●	●				2.7	2.37	3.36	4.75	5.82	7.51	8.89	10.62	3/4"	42	15	32	27
DA18.650		●	●				3.1	3.25	4.60	6.50	7.96	10.28	12.16	14.53	Weight (Metals) = 155 gms. Approx				
DA18.800		●	●				3.5	4.00	5.66	8.00	9.80	12.65	14.97	17.89	1"	56	17	39	36
DA28.100			●				3.9	5.00	7.07	10.00	12.25	15.81	18.71	22.36	Weight (Metals) = 367 gms. Approx				
DA28.125			●				4.3	6.25	8.84	12.50	15.31	19.76	23.39	27.95					
DA28.160			●	●			4.9	8.00	11.31	16.00	19.60	25.30	29.93	35.78					
DA28.180				●			5.2	9.00	12.73	18.00	22.05	28.46	33.67	40.25					
DA28.200				●			5.5	10.00	14.14	20.00	24.49	31.62	37.42	44.72					
DA28.225				●			5.8	11.25	15.91	22.50	27.56	35.58	42.09	50.31					
DA28.250				●	●		6.1	12.50	17.68	25.00	30.62	39.53	46.77	55.90					
DA28.320				●	●		6.9	16.00	22.63	32.00	39.19	50.60	59.87	71.55					
DA28.400					●		7.7	20.00	28.28	40.00	48.99	63.25	74.83	89.44					
DA28.520					●		8.8	26.00	36.77	52.00	63.69	82.22	97.28	116.28					
DA28.650					●		9.9	32.50	45.96	65.00	79.61	102.77	121.60	145.34					
DA28.720					●		10.4	36.00	50.91	72.00	88.18	113.8	134.7	161.0					

End Connection : X – BSP, Y - BSPT, Z – NPT Available.

# DA Series Full Cone Spray Nozzles

DA

(Axial Flow Male)

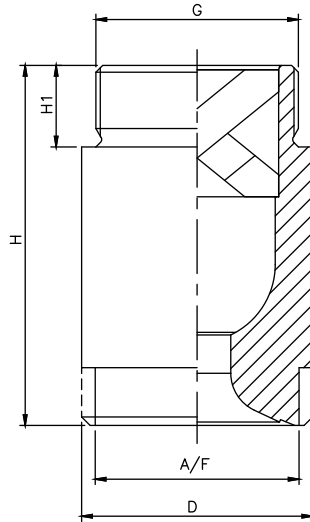


The larger spray nozzles in the D series are widely used in the industry, for a wide variety of applications. They maintain the simple design of the smaller nozzles, with the inherent resistance to clogging due to design of the X-vane, and are often manufactured out high quality alloys and special plastic materials.

Design for 1-1/4", 1-1/2", 2"

MODEL NO.	CONNECTION END			ORIFICE SIZE (mm)	FLOW CAPACITY IN LPM AT DIFFERENT PRESSURE							G/A DIMENSION. MM				
	1 1/4"	1 1/2"	2"		PRESSURE [BAR]							CONN.	H	H1	D	A/F
60° SPRAY ANGLE	BSP BSPT NPT	BSP BSPT NPT	BSP BSPT NPT		0.5	1.0	2.0	3.0	5.0	7.0	10.0					
DA24.650	●			9.0	32.5	45.96	<b>65.00</b>	79.61	102.77	121.60	145.34	1 1/4"	74	19	49	41
DA24.800	●			10.0	40.00	56.57	<b>80.00</b>	97.98	126.49	149.67	178.89	Weight (Metals) = XXX gms. Approx				
DA34.100	●			11.20	50.00	70.71	<b>100.0</b>	122.47	158.11	187.08	223.61	1 1/2"	85	22	59	50
DA34.118		●		12.2	59.00	83.44	<b>118.0</b>	144.52	186.57	220.76	263.86	Weight (Metals) = XXX gms. Approx				
DA34.130		●		12.8	65.00	91.92	<b>130.0</b>	159.22	205.55	243.21	290.69	2"	106	24	68	60
DA34.160		●		14.2	80.00	113.14	<b>160.0</b>	195.96	252.98	299.33	357.77	Weight (Metals) = XXX gms. Approx				
DA34.200			●	15.8	100	141.42	<b>200.0</b>	244.95	316.23	374.17	447.21					
DA34.227			●	16.9	113.5	160.51	<b>227.0</b>	278.02	358.92	424.68	507.59					
DA34.250			●	17.7	125	176.78	<b>250.0</b>	306.19	395.19	467.71	559.02					
DA34.300			●	19.1	150	212.13	<b>300.0</b>	367.42	474.34	561.25	670.82					
DA34.337			●	20.6	168.5	238.29	<b>337.0</b>	412.74	532.84	630.47	753.55					

MODEL NO.	CONNECTION END			ORIFICE SIZE (mm)	FLOW CAPACITY IN LPM AT DIFFERENT PRESSURE							G/A DIMENSION. MM				
	1 1/4"	1 1/2"	2"		PRESSURE [BAR]							CONN.	H	H1	D	A/F
90° SPRAY ANGLE	BSP BSPT NPT	BSP BSPT NPT	BSP BSPT NPT		0.5	1.0	2.0	3.0	5.0	7.0	10.0					
DA26.650	●			9.7	32.5	45.96	<b>65.00</b>	79.61	102.77	121.60	145.34	1 1/4"		19	49	41
DA26.800	●			10.7	40.00	56.57	<b>80.00</b>	97.98	126.49	149.67	178.89	Weight (Metals) = 525.0 gms. Approx				
DA36.100	●			12.0	50.00	70.71	<b>100.0</b>	122.47	158.11	187.08	223.61	1 1/2"	85	22	59	50
DA36.118		●		13.0	59.00	83.44	<b>118.0</b>	144.52	186.57	220.76	263.86	Weight (Metals) = 915.0 gms. Approx				
DA36.130		●		13.7	65.00	91.92	<b>130.0</b>	159.22	205.55	243.21	290.69	2"	106	24	68	60
DA36.160		●		15.20	80.00	113.14	<b>160.0</b>	195.96	252.98	299.33	357.77	Weight (Metals) = 1535.0 gms. Approx				
DA36.200			●	17.0	100	141.42	<b>200.0</b>	244.95	316.23	374.17	447.21					
DA36.227			●	18.1	113.5	160.51	<b>227.0</b>	278.02	358.92	424.68	507.59					
DA36.250			●	19.0	125	176.78	<b>250.0</b>	306.19	395.19	467.71	559.02					
DA36.300			●	20.5	150	212.13	<b>300.0</b>	367.42	474.34	561.25	670.82					
DA36.337			●	22.0	168.5	238.29	<b>337.0</b>	412.74	532.84	630.47	753.55					



- Application** : Surface spraying, Washing & Cooling of flue gasses to remove fly ash, Cooling condenser, Scrubbing, Foam breaking.
- Flow Rate** : 65 LPM to 1250 LPM
- Pressure** : 2.0 Kg/cm<sup>2</sup> or specified
- Spray Angle** : 60° to 120°
- End Connection** : 1 1/4" to 4" BSPT / NPT or BSPP
- M.O.C.** : S.S. 316, 304, Brass, PVC, PVDF, PP, Teflon®

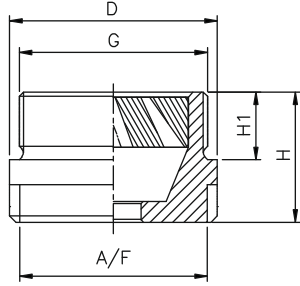
The larger spray nozzles in the DA Series are widely used in the industry, for a wide variety of applications. They maintain the simple design of the smaller nozzles, with the inherent resistance to clogging due to design of the X-vane and are often manufactured by any type of machinable material like SS304, SS316, PP/PVC etc.

MODEL NO.	CONNECTION END			ORIFICE SIZE (mm)	FLOW CAPACITY IN LPM AT DIFFERENT PRESSURE							G/A DIMENSION. MM				
	1 1/4"	1 1/2"	2"		PRESSURE [BAR]											
120° SPRAY ANGLE	BSP BSPT NPT	BSP BSPT NPT	BSP BSPT NPT		0.5	1.0	2.0	3.0	5.0	7.0	10.0	CONN.	H	H1	D	A/F
DA28.800	●			11.4	40.00	56.57	80.00	97.98	126.49	149.67	178.89	1 1/4"	74	19	49	41
DA38.100	●			12.7	50.00	70.71	100.0	122.47	158.11	187.08	223.61	Weight (Metals) = XX gms. Approx				
DA38.118	●	●		13.8	59.00	83.44	118.0	144.52	186.57	220.76	263.86	1 1/2"	85	22	59	50
DA38.130	●	●		14.5	65.00	91.92	130.0	159.22	205.55	243.21	290.69	Weight (Metals) = XX gms. Approx				
DA38.160		●		16.1	80.00	113.14	160.0	195.96	252.98	299.33	357.77	2"	106	24	68	60
DA38.200			●	18.0	100.0	141.42	200.0	244.95	316.23	374.17	447.21	Weight (Metals) = XX gms. Approx				
DA38.227			●	19.1	113.5	160.51	227.0	278.02	358.92	424.68	507.59					
DA38.250			●	20.1	125.0	176.78	250.0	306.19	395.19	467.71	559.02					
DA38.300			●	21.5	150	212.13	300.0	367.42	474.34	561.25	670.82					
DA38.337			●	23.3	168.5	238.29	337.0	412.74	532.84	630.47	753.55					

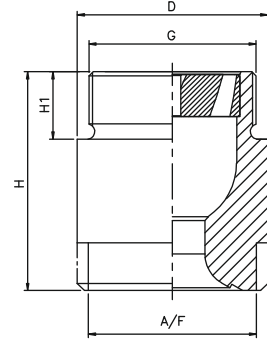
# DA Series Full Cone Spray Nozzles

(Male)

DA



Spray Angle 60°/ 90°



Spray Angle 120°

60° SPRAY ANGLE	CONNECTION END				ORIFICE SIZE (mm)	FLOW CAPACITY IN LPM AT DIFFERENT PRESSURE							G/A DIMENSION. MM				
	2 1/2"	3"	3 1/2"	4"		PRESSURE [BAR]							CONN.	H	H1	D	A/F
MODEL NO.	BSP BSPT NPT	BSP BSPT NPT	BSP BSPT NPT	BSP BSPT NPT		0.5	1.0	2.0	3.0	5.0	7.0	10.0	CONN.	H	H1	D	A/F
DA34.400	●				25.0	200	282.84	400	489.90	632.46	748.33	894.43	2 1/2"	52	27	83	75
DA34.500	●				28.0	250	353.55	500	612.37	790.57	935.41	1118.03	Weight (Metals) = XX gms. Approx				
DA34.625		●			31.3	312.5	441.94	625	765.47	988.21	1169.27	1397.54	3"	60	30	98	85
DA34.710		●			33.3	355	502.05	710	869.57	1122.61	1328.29	1587.61	Weight (Metals) = XX gms. Approx				
DA34.800			●		35.4	400	565.69	800	979.80	1264.91	1496.66	1788.85	3 1/2"	70	32	118	105
DA44.1000			●		36.0	500	707.11	1000	1224.74	1581.14	1870.83	2236.07	Weight (Metals) = XX gms. Approx				
DA44.1250				●	42.0	625	883.88	1250	1530.93	1976.42	2338.54	2795.08	4"	90	36	128	110
													Weight (Metals) = XX gms. Approx				

90° SPRAY ANGLE	CONNECTION END				ORIFICE SIZE (mm)	FLOW CAPACITY IN LPM AT DIFFERENT PRESSURE							G/A DIMENSION. MM				
	2 1/2"	3"	3 1/2"	4"		PRESSURE [BAR]							CONN.	H	H1	D	A/F
MODEL NO.	BSP BSPT NPT	BSP BSPT NPT	BSP BSPT NPT	BSP BSPT NPT		0.5	1.0	2.0	3.0	5.0	7.0	10.0	CONN.	H	H1	D	A/F
DA36.400	●				25.0	200	282.84	400	489.90	632.46	748.33	894.43	2 1/2"	52	27	83	75
DA36.500	●				28.0	250	353.55	500	612.37	790.57	935.41	1118.03	Weight (Metals) = 1318 gms. Approx				
DA36.625		●			31.3	312.5	441.94	625	765.47	988.21	1169.27	1397.54	3"	60	30	98	85
DA36.710		●			33.3	355	502.05	710	869.57	1122.61	1328.29	1587.61	Weight (Metals) = 1676 gms. Approx				
DA36.800			●		35.4	400	565.69	800	979.80	1264.91	1496.66	1788.85	3 1/2"	70	32	118	105
DA46.1000			●		36.0	500	707.11	1000	1224.74	1581.14	1870.83	2236.07	Weight (Metals) = 3805 gms. Approx				
DA46.1250				●	42.0	625	883.88	1250	1530.93	1976.42	2338.54	2795.08	4"	90	36	128	110
													Weight (Metals) = XX gms. Approx				

120° SPRAY ANGLE	CONNECTION END				ORIFICE SIZE (mm)	FLOW CAPACITY IN LPM AT DIFFERENT PRESSURE							G/A DIMENSION. MM				
	2 1/2"	3"	3 1/2"	4"		PRESSURE [BAR]							CONN.	H	H1	D	A/F
MODEL NO.	BSP BSPT NPT	BSP BSPT NPT	BSP BSPT NPT	BSP BSPT NPT		0.5	1.0	2.0	3.0	5.0	7.0	10.0	CONN.	H	H1	D	A/F
DA38.400	●				25.0	200	282.84	400	489.90	632.46	748.33	894.43	2 1/2"	124	27	83	75
DA38.500	●				28.0	250	353.55	500	612.37	790.57	935.41	1118.03	Weight (Metals) = 2989 gms. Approx				
DA38.625		●			31.3	312.5	441.94	625	765.47	988.21	1169.27	1397.54	3"	128	30	98	85
DA38.710		●			33.3	355	502.05	710	869.57	1122.61	1328.29	1587.61	Weight (Metals) = 5073 gms. Approx				
DA38.800			●		35.4	400	565.69	800	979.80	1264.91	1496.66	1788.85	3 1/2"	155	32	118	105
DA48.1000			●		36.0	500	707.11	1000	1224.74	1581.14	1870.83	2236.07	Weight (Metals) = 8380 gms. Approx				
DA48.1250				●	42.0	625	883.88	1250	1530.93	1976.42	2338.54	2795.08	4"	165	36	128	110
													Weight (Metals) = 9513 gms. Approx				