

CF Series Flat Spray Nozzles - Dove Tail Type

CF



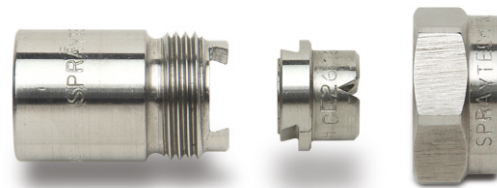
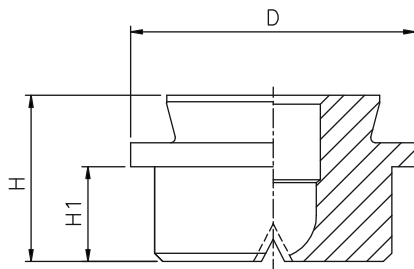
Uniform, parabolic distribution of liquid Headers, equipped with these nozzles, show a highly uniform total distribution of liquids, even at different installation heights and centers.

Application:

Cleaning plants, spray headers, cooling pipes, roll cooling, cooling of rolled products.

Note :

Connection to pipe by means of screwed nut and nipple. Nozzle position fixed by self-setting dove-tail. Flat preset at 15° to pipe axis.



MODEL NO.	ORIFICE SIZE (mm)	FLOW CAPACITY IN LPM AT DIFFERENT PRESSURE								G/A DIMENSION. MM		
		SPRAY ANGLE	PRESSURE [BAR]							H	H1	D
			0.5	1.0	2.0	3.0	5.0	7.0	10.0			
CF11.650	3.1	15°	3.25	4.60	6.50	7.96	10.28	12.16	14.53	14	8	24
CF11.800	3.5		4.00	5.66	8.00	9.80	12.65	14.97	17.89	Weight (Metals) = 35.0 gms. Approx		
CF21.100	3.9		5.00	7.07	10.00	12.25	15.81	18.71	22.36			
CF21.125	4.3		6.25	8.84	12.50	15.31	19.76	23.39	27.95			
CF21.160	4.9		8.00	11.31	16.00	19.60	25.30	29.93	35.78			
CF21.180	5.2		9.00	12.73	18.00	22.05	28.46	33.67	40.25			
CF21.200	5.5		10.00	14.14	20.00	24.49	31.62	37.42	44.72			
CF21.225	5.8		11.25	15.91	22.50	27.56	35.58	42.09	50.31			
CF21.250	6.1		12.50	17.68	25.00	30.62	39.53	46.77	55.90			
CF21.320	6.4		16.00	22.63	32.00	39.19	50.60	59.87	71.55			
CF21.400	7.8		20.00	28.28	40.00	48.99	63.25	74.83	89.44			
CF21.520	8.9		26.00	36.77	52.00	63.69	82.22	97.28	116.28			
CF21.650	9.9	32.50	45.96	65.00	79.61	102.77	121.60	145.34				
CF12.650	3.1	30°	3.25	4.60	6.50	7.96	10.28	12.16	14.53	14	8	24
CF12.800	3.5		4.00	5.66	8.00	9.80	12.65	14.97	17.89	Weight (Metals) = 35.0 gms. Approx		
CF22.100	3.9		5.00	7.07	10.00	12.25	15.81	18.71	22.36			
CF22.125	4.3		6.25	8.84	12.50	15.31	19.76	23.39	27.95			
CF22.160	4.9		8.00	11.31	16.00	19.60	25.30	29.93	35.78			
CF22.180	5.2		9.00	12.73	18.00	22.05	28.46	33.67	40.25			
CF22.200	5.5		10.00	14.14	20.00	24.49	31.62	37.42	44.72			
CF22.225	5.8		11.25	15.91	22.50	27.56	35.58	42.09	50.31			
CF22.250	6.1		12.50	17.68	25.00	30.62	39.53	46.77	55.90			
CF22.320	6.4		16.00	22.63	32.00	39.19	50.60	59.87	71.55			
CF22.400	7.8		20.00	28.28	40.00	48.99	63.25	74.83	89.44			
CF22.520	8.9		26.00	36.77	52.00	63.69	82.22	97.28	116.28			
CF22.650	9.9	32.50	45.96	65.00	79.61	102.77	121.60	145.34				

CF Series Flat Spray Nozzles - Dove Tail Type

			0.5	1.0	2.0	3.0	5.0	7.0	10.0	H	H1	D
CF13.650	3.1	45°	3.25	4.60	6.50	7.96	10.28	12.16	14.53	14	8	24
CF13.800	3.5		4.00	5.66	8.00	9.80	12.65	14.97	17.89	Weight (Metals) = 35 gms. Approx		
CF23.100	3.9		5.00	7.07	10.00	12.25	15.81	18.71	22.36			
CF23.125	4.3		6.25	8.84	12.50	15.31	19.76	23.39	27.95			
CF23.160	4.9		8.00	11.31	16.00	19.60	25.30	29.93	35.78			
CF23.180	5.2		9.00	12.73	18.00	22.05	28.46	33.67	40.25			
CF23.200	5.5		10.00	14.14	20.00	24.49	31.62	37.42	44.72			
CF23.225	5.8		11.25	15.91	22.50	27.56	35.58	42.09	50.31			
CF23.250	6.1		12.50	17.68	25.00	30.62	39.53	46.77	55.90			
CF23.320	6.4		16.00	22.63	32.00	39.19	50.60	59.87	71.55			
CF23.400	7.8		20.00	28.28	40.00	48.99	63.25	74.83	89.44			
CF23.520	8.9		26.00	36.77	52.00	63.69	82.22	97.28	116.28			
CF23.650	9.9		32.50	45.96	65.00	79.61	102.77	121.60	145.34			
CF14.650	3.1	60°	3.25	4.60	6.50	7.96	10.28	12.16	14.53	14	8	24
CF14.800	3.5		4.00	5.66	8.00	9.80	12.65	14.97	17.89	Weight (Metals) = 35 gms. Approx		
CF24.100	3.9		5.00	7.07	10.00	12.25	15.81	18.71	22.36			
CF24.125	4.3		6.25	8.84	12.50	15.31	19.76	23.39	27.95			
CF24.160	4.9		8.00	11.31	16.00	19.60	25.30	29.93	35.78			
CF24.180	5.2		9.00	12.73	18.00	22.05	28.46	33.67	40.25			
CF24.200	5.5		10.00	14.14	20.00	24.49	31.62	37.42	44.72			
CF24.225	5.8		11.25	15.91	22.50	27.56	35.58	42.09	50.31			
CF24.250	6.1		12.50	17.68	25.00	30.62	39.53	46.77	55.90			
CF24.320	6.4		16.00	22.63	32.00	39.19	50.60	59.87	71.55			
CF24.400	7.8		20.00	28.28	40.00	48.99	63.25	74.83	89.44			
CF24.520	8.9		26.00	36.77	52.00	63.69	82.22	97.28	116.28			
CF24.650	9.9		32.50	45.96	65.00	79.61	102.77	121.60	145.34			
CF16.650	3.1	90°	3.25	4.60	6.50	7.96	10.28	12.16	14.53	14	8	24
CF16.800	3.5		4.00	5.66	8.00	9.80	12.65	14.97	17.89	Weight (Metals) = 35 gms. Approx		
CF26.100	3.9		5.00	7.07	10.00	12.25	15.81	18.71	22.36			
CF26.125	4.3		6.25	8.84	12.50	15.31	19.76	23.39	27.95			
CF26.160	4.9		8.00	11.31	16.00	19.60	25.30	29.93	35.78			
CF26.180	5.2		9.00	12.73	18.00	22.05	28.46	33.67	40.25			
CF26.200	5.5		10.00	14.14	20.00	24.49	31.62	37.42	44.72			
CF26.225	5.8		11.25	15.91	22.50	27.56	35.58	42.09	50.31			
CF26.250	6.1		12.50	17.68	25.00	30.62	39.53	46.77	55.90			
CF26.320	6.4		16.00	22.63	32.00	39.19	50.60	59.87	71.55			
CF26.400	7.8		20.00	28.28	40.00	48.99	63.25	74.83	89.44			
CF26.520	8.9		26.00	36.77	52.00	63.69	82.22	97.28	116.28			
CF26.650	9.9		32.50	45.96	65.00	79.61	102.77	121.60	145.34			
CF18.650	3.1	120°	3.25	4.60	6.50	7.96	10.28	12.16	14.53	14	8	24
CF18.800	3.5		4.00	5.66	8.00	9.80	12.65	14.97	17.89	Weight (Metals) = 35 gms. Approx		
CF28.100	3.9		5.00	7.07	10.00	12.25	15.81	18.71	22.36			
CF28.125	4.3		6.25	8.84	12.50	15.31	19.76	23.39	27.95			
CF28.160	4.9		8.00	11.31	16.00	19.60	25.30	29.93	35.78			
CF28.180	5.2		9.00	12.73	18.00	22.05	28.46	33.67	40.25			
CF28.200	5.5		10.00	14.14	20.00	24.49	31.62	37.42	44.72			
CF28.225	5.8		11.25	15.91	22.50	27.56	35.58	42.09	50.31			
CF28.250	6.1		12.50	17.68	25.00	30.62	39.53	46.77	55.90			
CF28.320	6.4		16.00	22.63	32.00	39.19	50.60	59.87	71.55			
CF28.400	7.8		20.00	28.28	40.00	48.99	63.25	74.83	89.44			
CF28.520	8.9		26.00	36.77	52.00	63.69	82.22	97.28	116.28			
CF28.650	9.9		32.50	45.96	65.00	79.61	102.77	121.60	145.34			