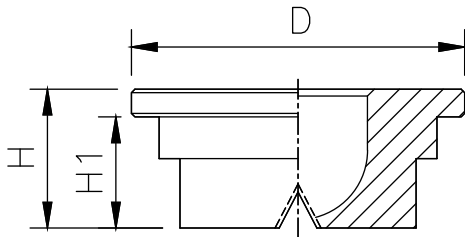


CD Series Flat Spray Nozzles

CD



Headers, Equipped with these nozzles, Show a highly uniform total distribution of liquids even at different installation heights and centers.

Application

Cleaning plants, Spray headers cooling pipes roll products. Connection to pipe by means of nut and nipple.

MODEL NO.	ORIFICE SIZE (mm)	FLOW CAPACITY IN LPM AT DIFFERENT PRESSURE								G/A DIMENSION. MM			
		SPRAY ANGLE	PRESSURE [BAR]								H	H1	D
			0.5	1.0	2.0	3.0	5.0	7.0	10.0				
CD11.650	3.1	15°	3.25	4.60	6.50	7.96	10.28	12.16	14.53	10	8	24	
CD11.800	3.5		4.00	5.66	8.00	9.80	12.65	14.97	17.89	Weight (Metals) = 12 gms. Approx			
CD21.100	3.9		5.00	7.07	10.00	12.25	15.81	18.71	22.36				
CD21.125	4.3		6.25	8.84	12.50	15.31	19.76	23.39	27.95				
CD21.160	4.9		8.00	11.31	16.00	19.60	25.30	29.93	35.78				
CD21.180	2.1		9.00	12.73	18.00	22.05	28.46	33.67	40.25				
CD21.200	5.5		10.00	14.14	20.00	24.49	31.62	37.42	44.72				
CD21.225	5.8		11.25	15.91	22.50	27.56	35.58	42.09	50.31				
CD21.250	6.1		12.50	17.68	25.00	30.62	39.53	46.77	55.90				
CD21.320	6.4		16.00	22.63	32.00	39.19	50.60	59.87	71.55				
CD21.400	7.8		20.00	28.28	40.00	48.99	63.25	74.83	89.44				
CD21.520	8.9		26.00	36.77	52.00	63.69	82.22	97.28	116.28				
CD21.650	9.9		32.50	45.96	65.00	79.61	102.77	121.60	145.34				
CD21.800	11.0		40.00	56.57	80.00	97.98	126.49	149.67	178.89				
CD31.100	11.3		50.00	70.71	100.0	122.4	158.1	187.0	223.6				
CD12.650	3.1		30°	3.25	4.60	6.50	7.96	10.28	12.16	14.53	10	8	24
CD12.800	3.5	4.00		5.66	8.00	9.80	12.65	14.97	17.89	Weight (Metals) = 12 gms. Approx			
CD22.100	3.9	5.00		7.07	10.00	12.25	15.81	18.71	22.36				
CD22.125	4.3	6.25		8.84	12.50	15.31	19.76	23.39	27.95				
CD22.160	4.9	8.00		11.31	16.00	19.60	25.30	29.93	35.78				
CD22.180	5.2	9.00		12.73	18.00	22.05	28.46	33.67	40.25				
CD22.200	5.5	10.00		14.14	20.00	24.49	31.62	37.42	44.72				
CD22.225	5.8	11.25		15.91	22.50	27.56	35.58	42.09	50.31				
CD22.250	6.1	12.50		17.68	25.00	30.62	39.53	46.77	55.90				
CD22.320	6.4	16.00		22.63	32.00	39.19	50.60	59.87	71.55				
CD22.400	7.8	20.00		28.28	40.00	48.99	63.25	74.83	89.44				
CD22.520	8.9	26.00		36.77	52.00	63.69	82.22	97.28	116.28				
CD22.650	9.9	32.50		45.96	65.00	79.61	102.77	121.60	145.34				
CD22.800	11.0	40.00		56.57	80.00	97.98	126.49	149.67	178.89				
CD32.100	11.3	50.00		70.71	100.0	122.4	158.1	187.0	223.6				

CD Series Flat Spray Nozzles

										H	H1	D
CD13.650	3.1	45°	0.5	1.0	2.0	3.0	5.0	7.0	10.0	10	8	24
CD13.800	3.5		3.25	4.60	6.50	7.96	10.28	12.16	14.53	Weight (Metals) = 12 gms. Approx		
CD23.100	3.9		4.00	5.66	8.00	9.80	12.65	14.97	17.89			
CD23.125	4.3		5.00	7.07	10.00	12.25	15.81	18.71	22.36			
CD23.160	4.9		6.25	8.84	12.50	15.31	19.76	23.39	27.95			
CD23.180	2.1		8.00	11.31	16.00	19.60	25.30	29.93	35.78			
CD23.200	5.5		9.00	12.73	18.00	22.05	28.46	33.67	40.25			
CD23.225	5.8		10.00	14.14	20.00	24.49	31.62	37.42	44.72			
CD23.250	6.1		11.25	15.91	22.50	27.56	35.58	42.09	50.31			
CD23.320	6.4		12.50	17.68	25.00	30.62	39.53	46.77	55.90			
CD23.400	7.8		16.00	22.63	32.00	39.19	50.60	59.87	71.55			
CD23.520	8.9		20.00	28.28	40.00	48.99	63.25	74.83	89.44			
CD23.650	9.9		26.00	36.77	52.00	63.69	82.22	97.28	116.28			
CD23.800	11.0		32.50	45.96	65.00	79.61	102.77	121.60	145.34			
CD33.100	11.3	40.00	56.57	80.00	97.98	126.49	149.67	178.89				
		50.00	70.71	100.0	122.4	158.1	187.0	223.6				
CD14.650	3.1	60°	0.5	1.0	2.0	3.0	5.0	7.0	10.0	10	8	24
CD14.800	3.5		3.25	4.60	6.50	7.96	10.28	12.16	14.53	Weight (Metals) = 11 gms. Approx		
CD24.100	3.9		4.00	5.66	8.00	9.80	12.65	14.97	17.89			
CD24.125	4.3		5.00	7.07	10.00	12.25	15.81	18.71	22.36			
CD24.160	4.9		6.25	8.84	12.50	15.31	19.76	23.39	27.95			
CD24.180	5.2		8.00	11.31	16.00	19.60	25.30	29.93	35.78			
CD24.200	5.5		9.00	12.73	18.00	22.05	28.46	33.67	40.25			
CD24.225	5.8		10.00	14.14	20.00	24.49	31.62	37.42	44.72			
CD24.250	6.1		11.25	15.91	22.50	27.56	35.58	42.09	50.31			
CD24.320	6.4		12.50	17.68	25.00	30.62	39.53	46.77	55.90			
CD24.400	7.8		16.00	22.63	32.00	39.19	50.60	59.87	71.55			
CD24.520	8.9		20.00	28.28	40.00	48.99	63.25	74.83	89.44			
CD24.650	9.9		26.00	36.77	52.00	63.69	82.22	97.28	116.28			
CD24.800	11.0		32.50	45.96	65.00	79.61	102.77	121.60	145.34			
CD34.100	11.3	40.00	56.57	80.00	97.98	126.49	149.67	178.89				
		50.00	70.71	100.0	122.4	158.1	187.0	223.6				
CD16.650	3.1	90°	0.5	1.0	2.0	3.0	5.0	7.0	10.0	10	8	24
CD16.800	3.5		3.25	4.60	6.50	7.96	10.28	12.16	14.53	Weight (Metals) = 8.5 gms. Approx		
CD26.100	3.9		4.00	5.66	8.00	9.80	12.65	14.97	17.89			
CD26.125	4.3		5.00	7.07	10.00	12.25	15.81	18.71	22.36			
CD26.160	4.9		6.25	8.84	12.50	15.31	19.76	23.39	27.95			
CD26.180	5.2		8.00	11.31	16.00	19.60	25.30	29.93	35.78			
CD26.200	5.5		9.00	12.73	18.00	22.05	28.46	33.67	40.25			
CD26.225	5.8		10.00	14.14	20.00	24.49	31.62	37.42	44.72			
CD26.250	6.1		11.25	15.91	22.50	27.56	35.58	42.09	50.31			
CD26.320	6.4		12.50	17.68	25.00	30.62	39.53	46.77	55.90			
CD26.400	7.8		16.00	22.63	32.00	39.19	50.60	59.87	71.55			
CD26.520	8.9		20.00	28.28	40.00	48.99	63.25	74.83	89.44			
CD26.650	9.9		26.00	36.77	52.00	63.69	82.22	97.28	116.28			
CD26.800	11.0		32.50	45.96	65.00	79.61	102.77	121.60	145.34			
CD36.100	11.3	40.00	56.57	80.00	97.98	126.49	149.67	178.89				
		50.00	70.71	100.0	122.4	158.1	187.0	223.6				
CD18.650	3.1	120°	0.5	1.0	2.0	3.0	5.0	7.0	10.0	10	8	24
CD18.800	3.5		3.25	4.60	6.50	7.96	10.28	12.16	14.53	Weight (Metals) = 8.5 gms. Approx		
CD28.100	3.9		4.00	5.66	8.00	9.80	12.65	14.97	17.89			
CD28.125	4.3		5.00	7.07	10.00	12.25	15.81	18.71	22.36			
CD28.160	4.9		6.25	8.84	12.50	15.31	19.76	23.39	27.95			
CD28.180	5.2		8.00	11.31	16.00	19.60	25.30	29.93	35.78			
CD28.200	5.5		9.00	12.73	18.00	22.05	28.46	33.67	40.25			
CD28.225	5.8		10.00	14.14	20.00	24.49	31.62	37.42	44.72			
CD28.250	6.1		11.25	15.91	22.50	27.56	35.58	42.09	50.31			
CD28.320	6.4		12.50	17.68	25.00	30.62	39.53	46.77	55.90			
CD28.400	7.8		16.00	22.63	32.00	39.19	50.60	59.87	71.55			
CD28.520	8.9		20.00	28.28	40.00	48.99	63.25	74.83	89.44			
CD28.650	9.9		26.00	36.77	52.00	63.69	82.22	97.28	116.28			
CD28.800	11.0		32.50	45.96	65.00	79.61	102.77	121.60	145.34			
CD38.100	11.3	40.00	56.57	80.00	97.98	126.49	149.67	178.89				
		50.00	70.71	100.0	122.4	158.1	187.0	223.6				